

Photofolio

Mirena Veleva

2023



Table of Content

Photobook

Mirena Veleva

03	Hidden Faces
04	Three Objects
05-06	DOF
07-10	Noise
11-12	Golden Ratio
13-16	Picture Composition
17-18	Waterfall
19-22	Portraits
23-30	Architecture
31-36	Other Works

HIDDEN FACES



The Trees also
have feelings.



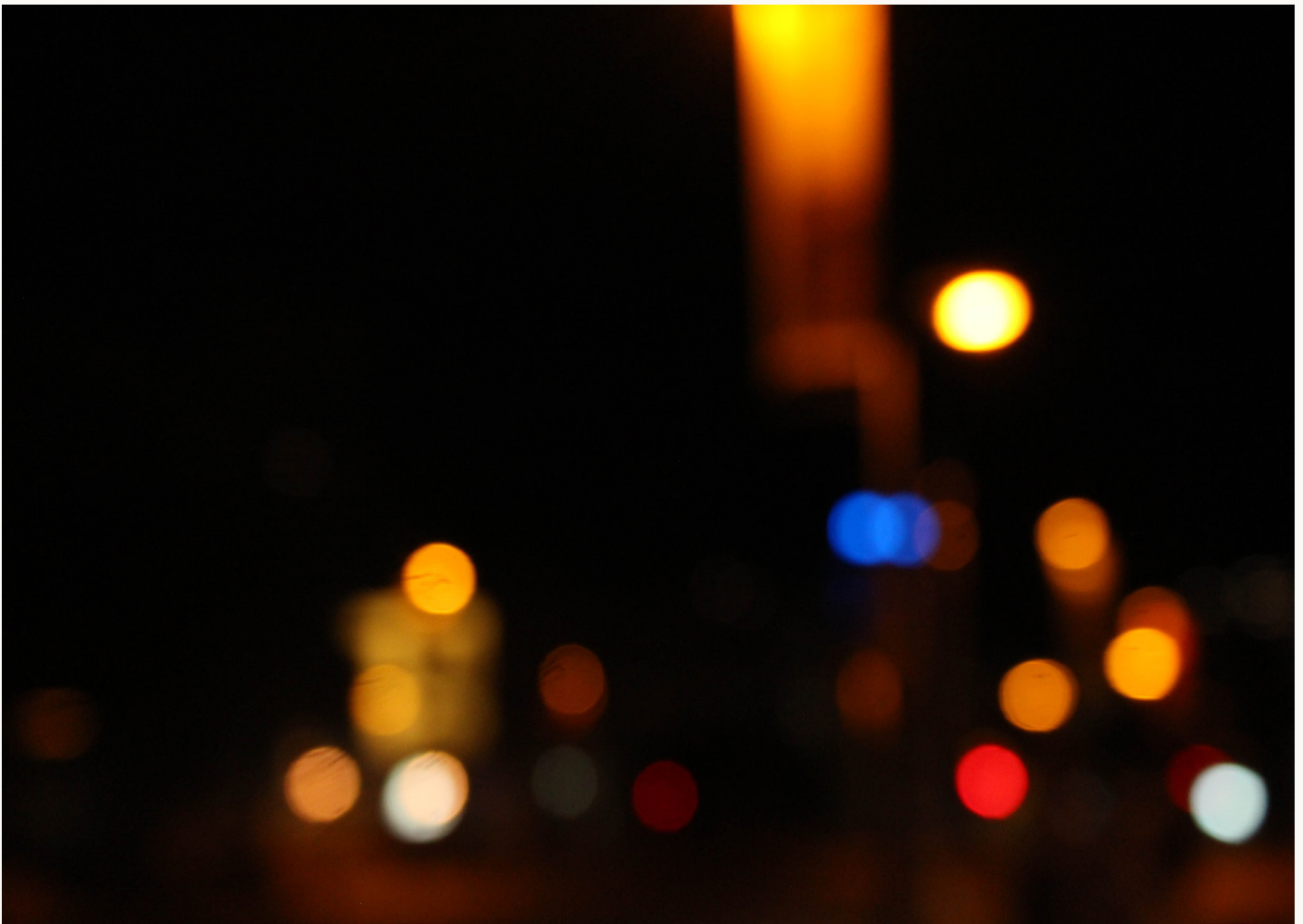
THREE OBJECTS



The focus in this case is on all of the objects.

Here, the focus is more on the camera and the purse is a second player.



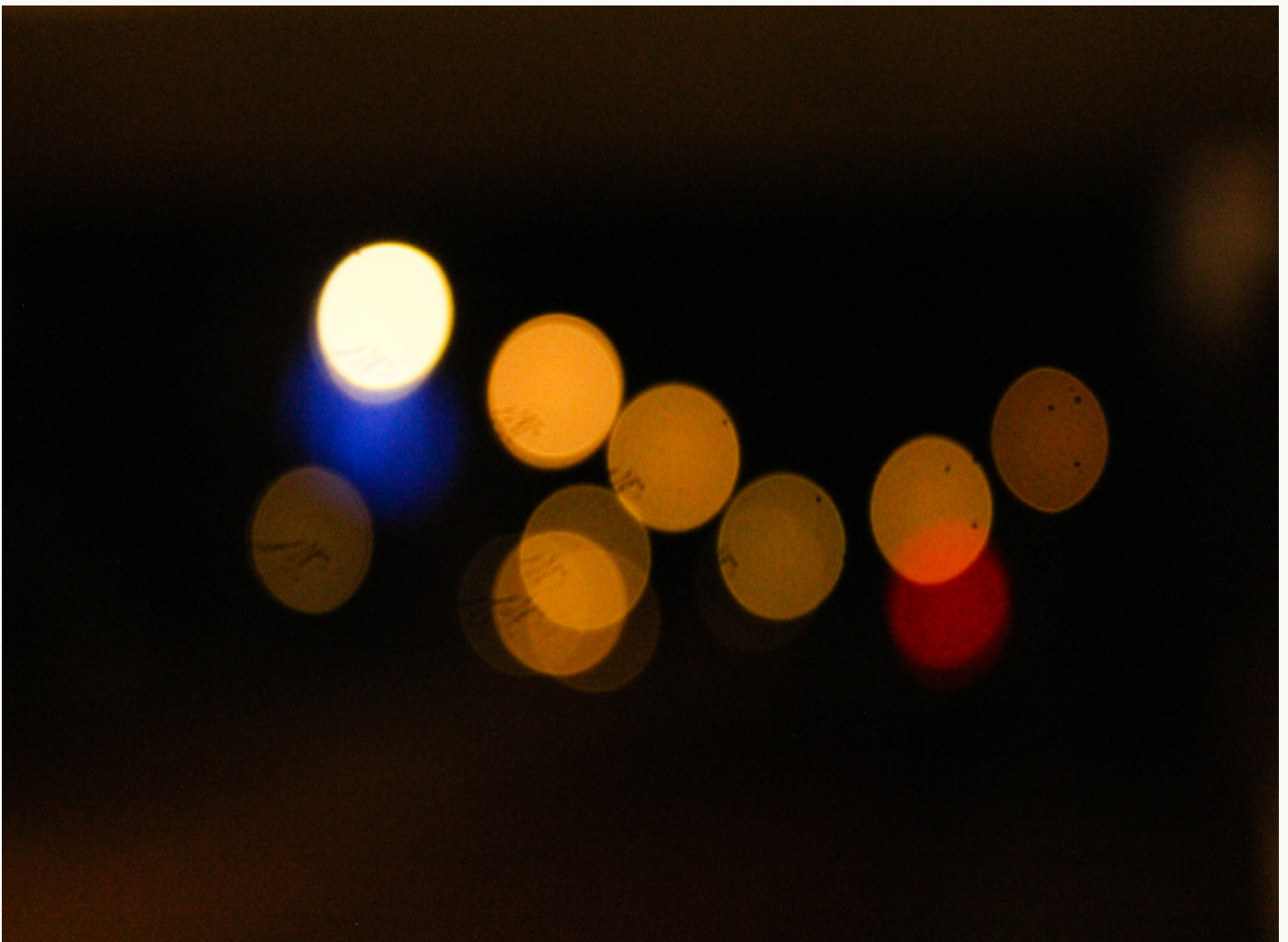


ISO: 1600; Shutter speed: 1/50sec; Aperture: f/5.6

I achieved a shallow depth of field with a wide aperture (small f-number), which allows more light to enter the camera and creates a narrow plane of focus, where only a small portion of the image appears in focus, while the rest of the image is blurred or out of focus.

DOF

ISO: 1600; Shutter speed: 1/50sec; Aperture: f/5.6



NOISE

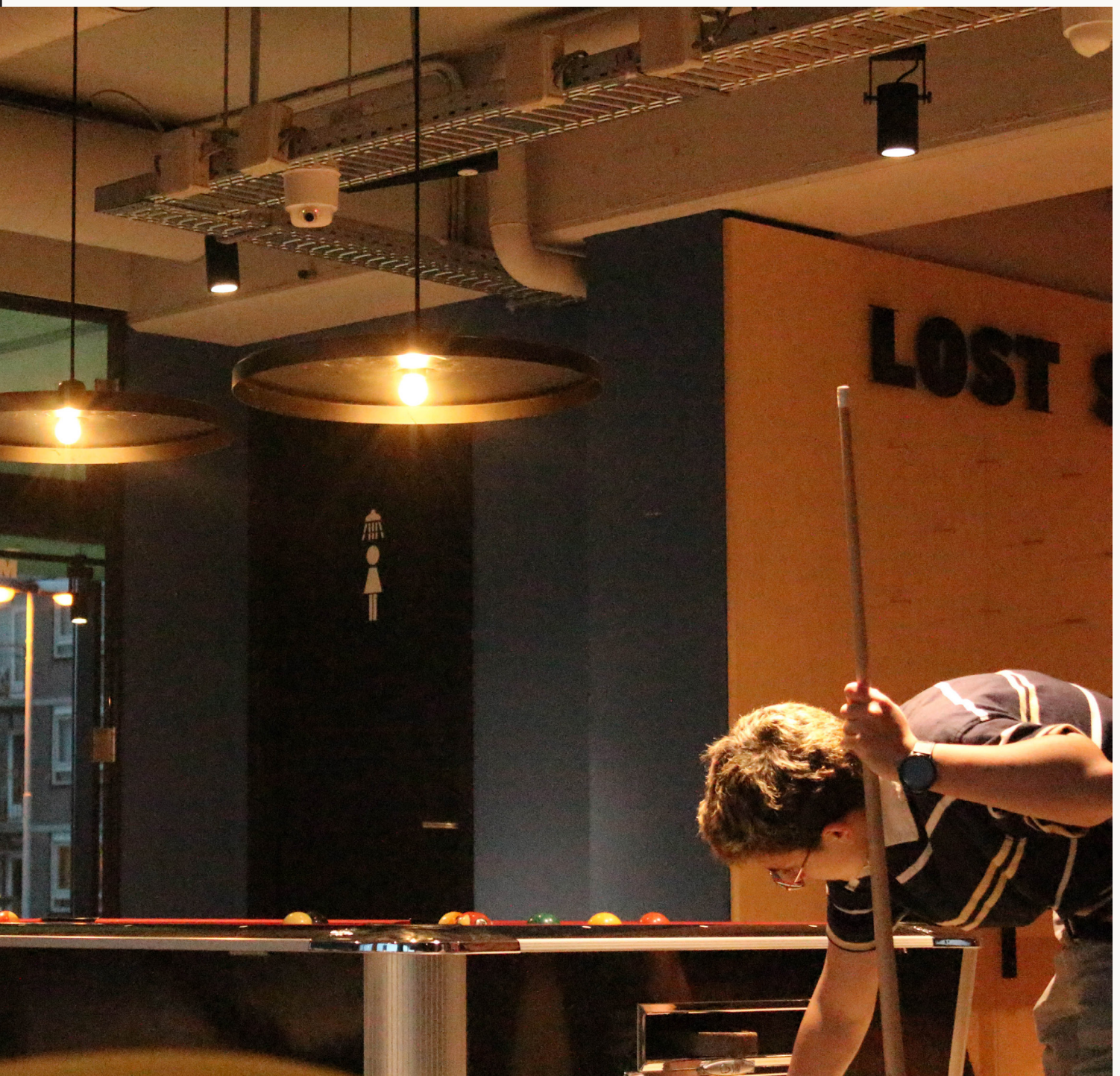
In photography, "noise" refers to the presence of unwanted grainy or speckled patterns in an image that are typically caused by a high ISO setting or low light conditions.

When a camera sensor is exposed to low light conditions or high ISO settings, the signal from the sensor becomes weak and can introduce random fluctuations in the signal, which appear as bright or dark pixels in the image. This noise can reduce the clarity and sharpness of an image, making it look grainy and less detailed.

In this part I have played with the settings of the ISO, to get different vibes.



ISO : 6400





ISO : 3200



ISO : 1600



ISO : 800



ISO : 800

Noise



Spiral of Life

ISO: 1000; Shutter speed:1/250sec; Aperture: f/5.6



The Path In Life

ISO: 1000; Shutter speed:1/250sec; Aperture: f/5.6

GOLDEN RATIO

The Golden Ratio creates a balanced and harmonious composition that draws the viewer's eye to the subject or focal point of the image.



ISO: 800; Shutter speed: 1/125sec; Aperture: f/5.6

I used the spiral composition, also known as the “Fibonacci spiral”. This spiral follows the proportions of the Golden Ratio and can be used to lead the viewer’s eye through the image, creating a sense of movement and visual interest.

PICTURE COMPOSITION

Picture composition refers to the arrangement and placement of visual elements within a photograph. It involves making deliberate decisions about how to frame the subject, what to include or exclude from the image, and how to balance the different elements within the frame to create a visually pleasing and compelling image.



Symmetry / Lines

ISO: 100; Shutter speed: 1/250sec; Aperture: f/5.6



ISO: 400; Shutter speed: 1/125sec; Aperture: f/5.6

Framing



Vanishing Point ISO: 100; Shutter speed: 1/250sec; Aperture: f/5.6



ISO: 100; Shutter speed: 1/250sec; Aperture: f/5.6

Frozen Movement

Composition



ISO: 1250; Shutter speed: 1/6sec; Aperture: f/36

Motion Blur

ISO: 200; Shutter speed:1/1250sec; Aperture: f/5.6



WATERFALL

A challenging, but rewarding assignment. To capture the silky smooth effect of the water and respecting the sunny weather at the same time, I had to use a shutter speed around 1/800.

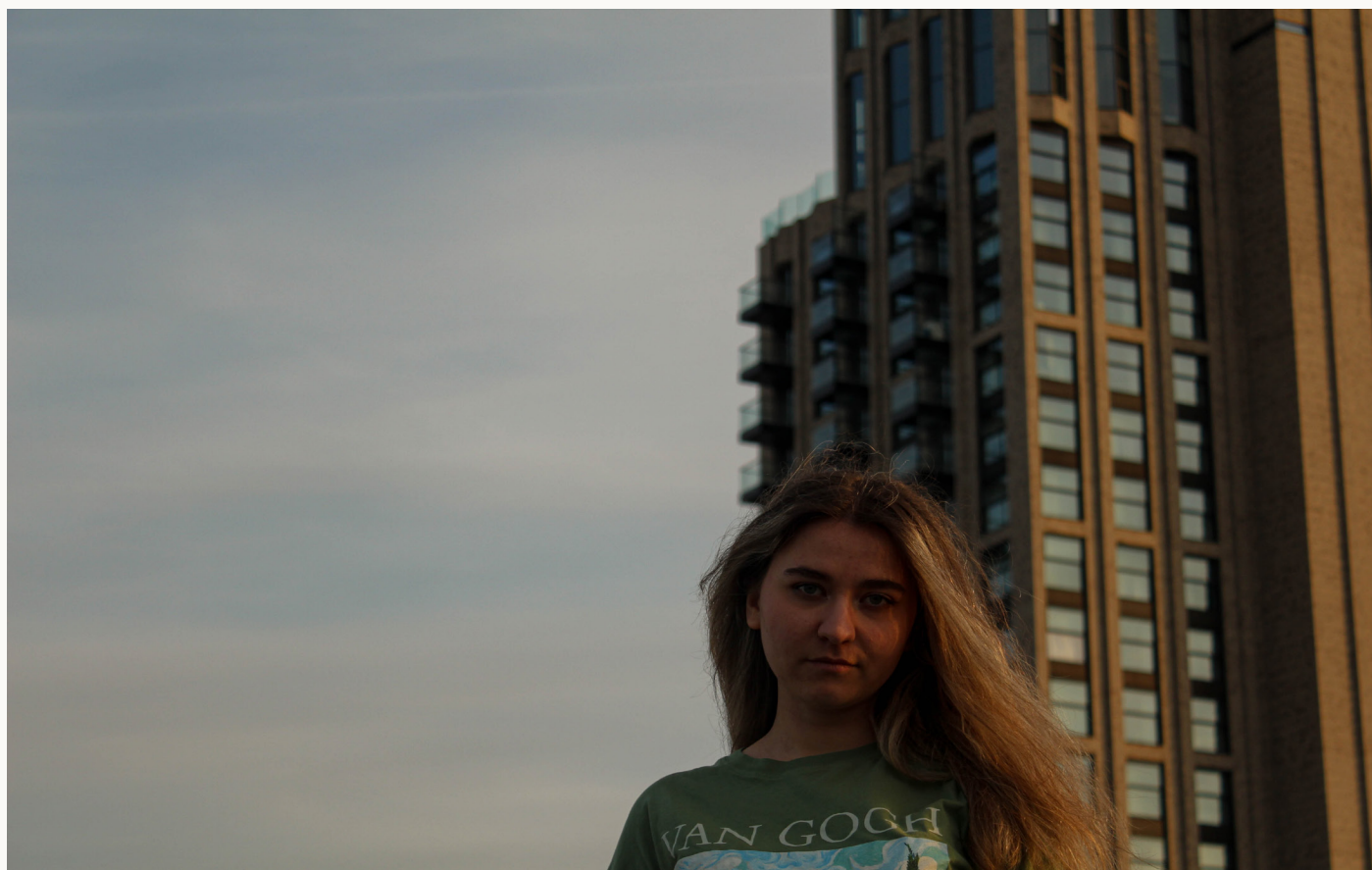
ISO: 200; Shutter speed: 1/800sec; Aperture: f/5.6



PORTRAITS



ISO: 1000; Shutter speed: 1/250sec; Aperture: f/5.6



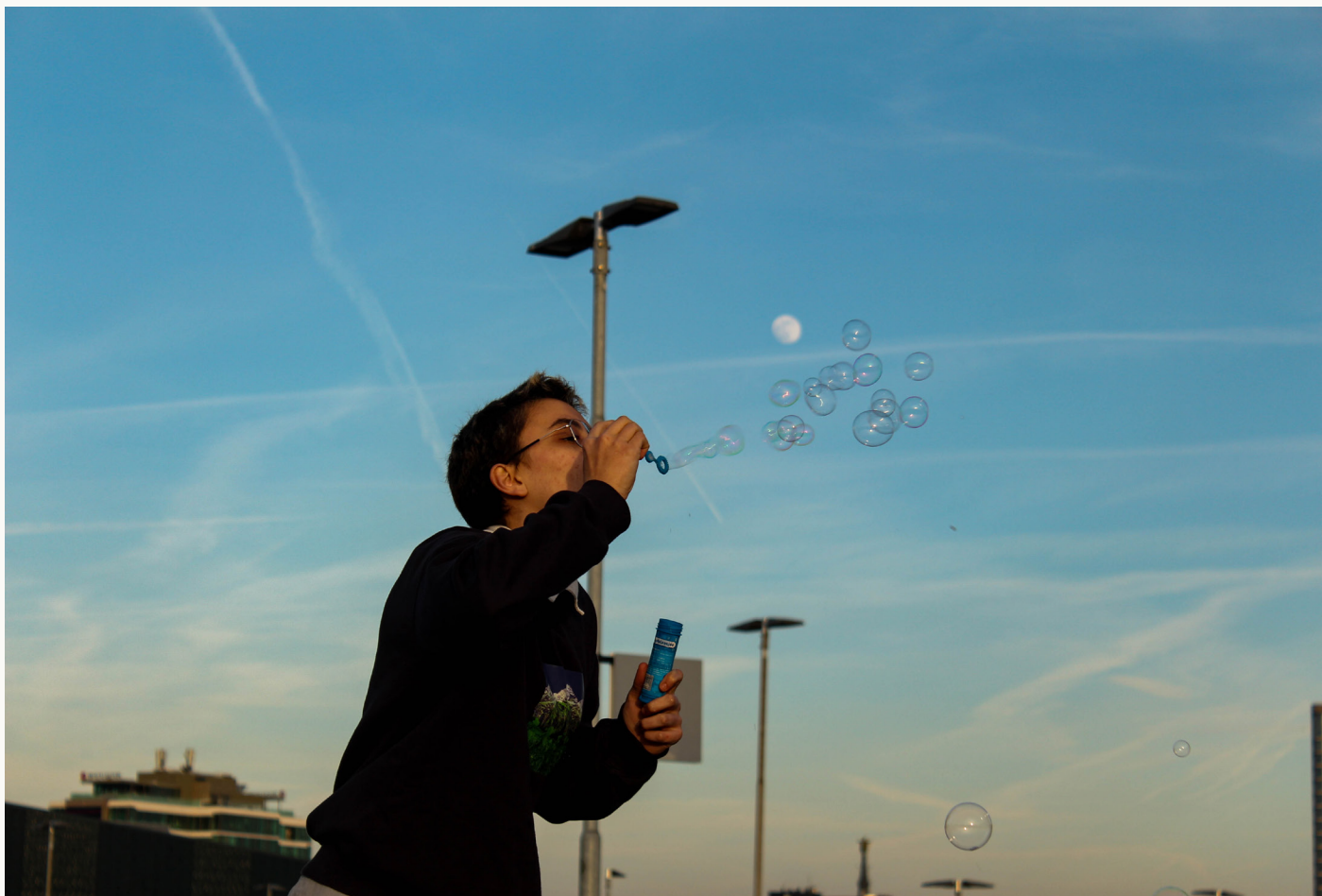
ISO: 1000; Shutter speed: 1/250sec; Aperture: f/5.6



ISO: 1000; Shutter speed: 1/250sec; Aperture: f/5.6



ISO: 100; Shutter speed:1/250sec; Aperture: f/5.6



ISO: 100; Shutter speed:1/250sec; Aperture: f/5.6



ISO: 500; Shutter speed: 1/250sec; Aperture: f/5.6



ISO: 250; Shutter speed: 1/400sec; Aperture: f/8.0

ARCHITECTURE



ISO: 100; Shutter speed: 1/250sec; Aperture: f/5.6



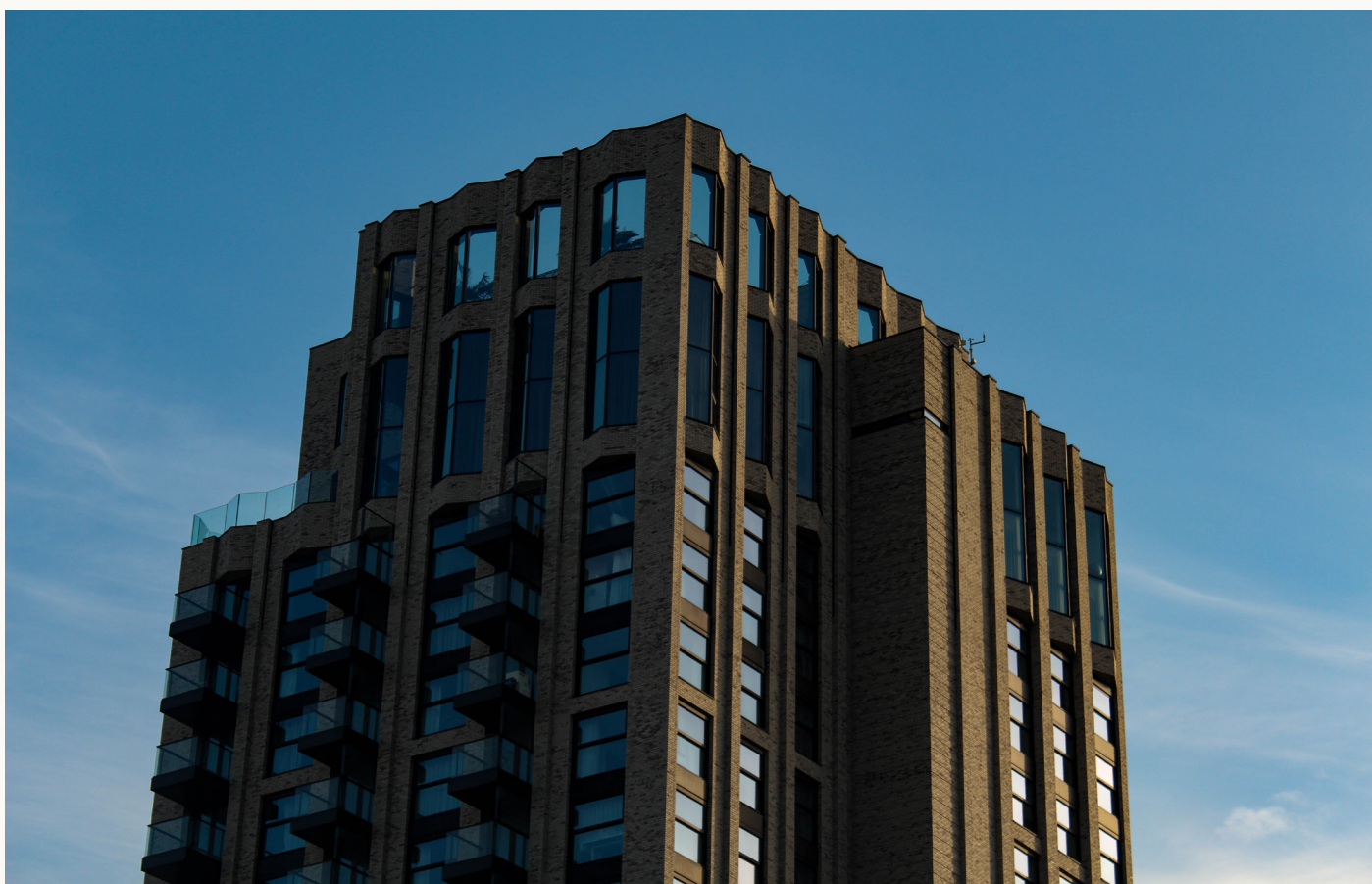
ISO: 250; Shutter speed:1/250sec; Aperture: f/8.0



ISO: 250; Shutter speed:1/250sec; Aperture: f/8.0



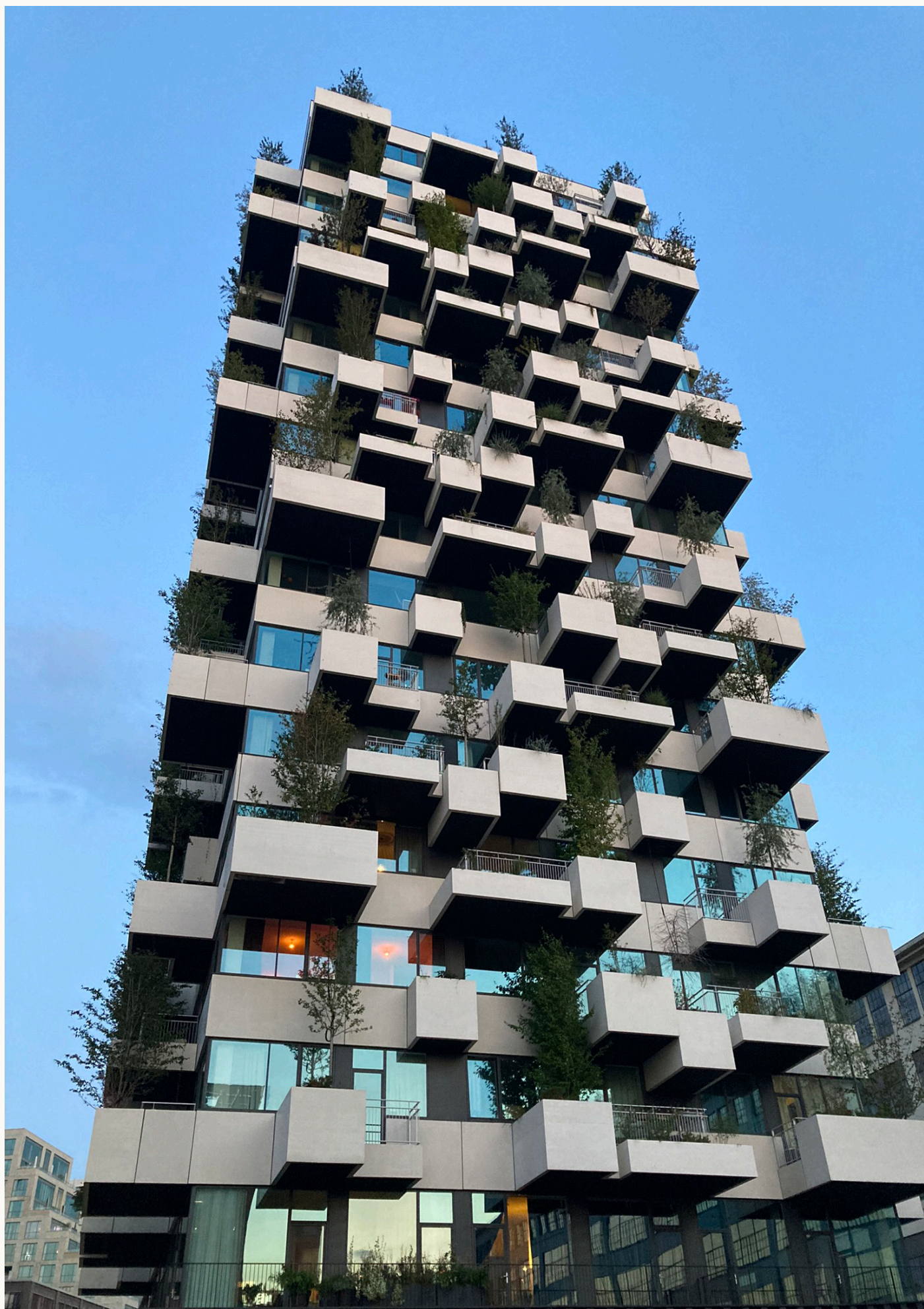
ISO: 100; Shutter speed:1/250sec; Aperture: f/8.0



ISO: 100; Shutter speed:1/250sec; Aperture: f/5.6



ISO: 100; Shutter speed: 1/250sec; Aperture: f/1.8



ISO: 400; Shutter speed: 1/60sec; Aperture: f/1.8



ISO: 400; Shutter speed: 1/40sec; Aperture: f/1.8



ISO: 400; Shutter speed: 1/40sec; Aperture: f/1.8

OTHER WORKS



ISO: 100; Shutter speed: 1/250sec; Aperture: f/8.0



ISO: 100; Shutter speed: 1/500sec; Aperture: f/5.6



ISO: 100; Shutter speed: 1/500sec; Aperture: f/5.6



ISO: 800; Shutter speed: 1/400sec; Aperture: f/8.0



ISO: 1000; Shutter speed: 1/400sec; Aperture: f/8.0



ISO: 100; Shutter speed:1/500sec; Aperture: f/5.6



ISO: 100; Shutter speed: 1/400sec; Aperture: f/5.6



Photofolío

MIRENA VELEVA